

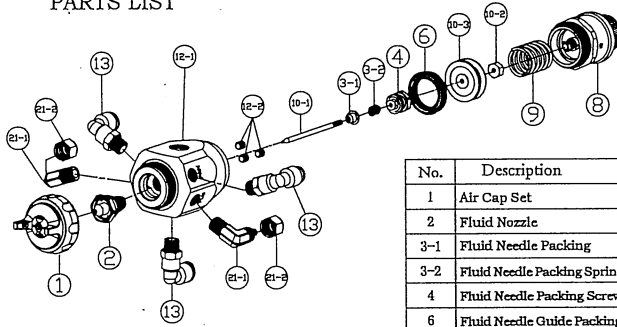
# Prona

## RAR110/210

## AUTOMATIC SPRAY GUN

## OPERATING

### PARTS LIST



No.	Description	Q'ty
1	Air Cap Set	1
2	Fluid Nozzle	1
3-1	Fluid Needle Packing	1
3-2	Fluid Needle Packing Spring	1
4	Fluid Needle Packing Screw	1
6	Fluid Needle Guide Packing	1
8	Fluid Adjusting Knob Guide Set	1

No.	Description	Q'ty
9	Needle Spring	1
10-1	Fluid Needle	1
10-2	Fluid Needle Fixed Screw	1
10-3	Footstock	1
12-1	Gun Body	1
12-2	Seal Bolt	3
13	Air Quick Coupler	3
21-1	Fluid Connector	2
21-2	Fluid Connector Sack Cap	2

Prior to operation read the operating instructions carefully.

### OPERATION

The AUTOMATIC SPRAY GUN has been designed as an AIR OPERATED TOOL, and in the interests of safety must only be used for the purpose for which it has been designed. The tool should on no account be used for any other purpose for whatever reason, this could result in danger to the operator and those within the immediate working area.

Whenever possible there should be air filters and air regulators in the system as diagram. Check fittings and hoses regularly for signs of fraying, or accidental damage. Replace any worn items before continuing to operate the Automatic Spray Gun.

Connector atomizing air hose to atomizing air connector (CAP marked) and operating air hose to operating air connector (CYL marked) tightly. Connect fluid hose to fluid connector (FLU marked) tightly.

### ADJUSTMENT

Valve orifice inside two-way or three-way solenoid valve should be minimum  $\phi 4\text{mm}$  (0.157 in).

Operating air hose should be within 10 m (32.8 ft) and its inner diameter not less than 6mm (0.236 in) to avoid delayed operation and any failure. Adjust operating air pressure from 3 to 4 bar (43 to 57 psi). Normally adjust atomizing or fan air pressure 2.2-2.7 bar (31-38 psi) with RAR-110/RAR-210.

The recommended spray distance to object is 15-20 cm (5.9-7.9 in) for RAR-110; 20-25 cm (7.9-9.8 in) for RAR-210.

The recommended material viscosity is 15-23 seconds/Ford#4. It varies according to material properties and spraying conditions.

Material should be filtered through 60-90 mesh filter before use

