

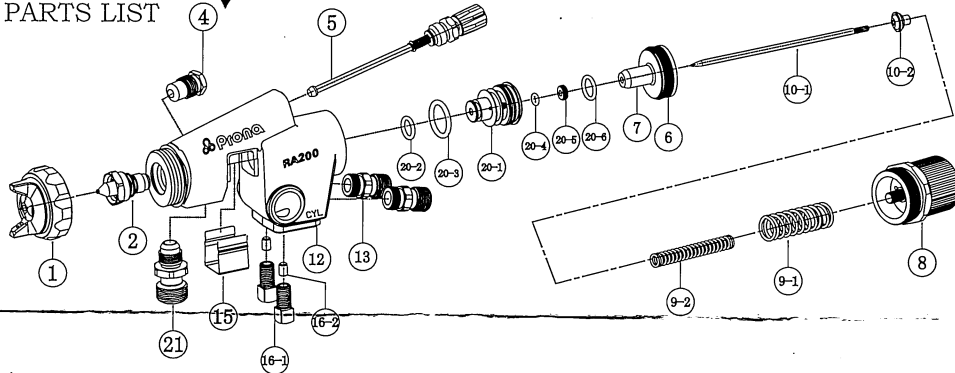
Prona

RA(L)200/203

AUTOMATIC SPRAY GUN

OPERATING INSTRUCTIONS

PARTS LIST



No.	Description	Q' ty	No.	Description	Q' ty	No.	Description	Q' ty
1	Air cap set	1	9-2	Needle spring 2	1	20-1	Air valve seat	1
2	Fluid nozzle	1	10-1	Fluid needle	1	20-2	O ring (P9)	1
4	Fluid needle packing screw set	1	10-2	Fluid needle seat	1	20-3	O ring (P16)	1
5	Pattern adjusting set	1	12	Gun body	1	20-4	O ring (P3)	1
6	Fluid needle guide packing	1	13	Air connector	2	20-5	Packing holder	1
7	Fluid needle guide	1	15	Protective cover	1	20-6	O ring (P10)	1
8	Fluid adjusting knob guide set	1	16-1	Fixed bolt	2	21	Fluid connector	1
9-1	Needle spring 1	1	16-2	Fixed bolt holder	2			

Prior to operation read the operating instructions carefully.

OPERATION

Connect atomizing air hose to atomizing air connector (CAP marked) and operating air hose to operating air connector (CYL marked) tightly. Connect fluid hose to fluid connector tightly.

Valve orifice inside three-way solenoid valve should be minimum $\Phi 4\text{mm}$ (0.157 in) and the operating hose should be within 10 m (32.8 ft) and the inside diameter must be not less than 6mm (0.236 in) to avoid delayed operation and any failure.

The recommended operating air pressure is 3-4 bar (43 - 57 psi) with RA-101/200 and RAL-101/200. When pattern adjusting set is fully opened, atomizing air pressure to pull the gun piston is recommended to adjust 3-4 bar (43-57 psi) with RA-101/200, and adjust 2.7 bar (38 psi) with RAL-101, 2.0 bar (29 psi) with RAL-200. So the gun will atomize at 0.7 bar (10 psi) inside air cap. The recommended spray distance to object is 15-20 cm (5.9-7.9 in) with RA-100; 10-20 cm (3.9-7.9 in) with RAL-101. And 20-25 cm (7.9-9.8 in) with RA-200; 10-20 cm (3.9-7.9 in) with RAL-101/200.

Beyond the recommended spray distance may fail to obtain good finishing.

Material viscosity 15-23 seconds/Ford#4 is recommended. It varies according to material property and spraying conditions. Material should be filtered through 60-90 mesh filter before use. Whenever possible there should be air filters and air regulators in the system as diagram. Replace any worn items before continuing to operate. The AUTOMATIC SPRAY GUN has been designed as an AIR OPERATED TOOL, and in the interests of safety must only be used for the purpose for which it has been designed. The tool should in no account be used for any other purpose for whatever reason, this could result in danger to the operator and those within the immediate working area. Ensure the material and air supply are disconnected before effecting any work on the Automatic Spray Gun.

